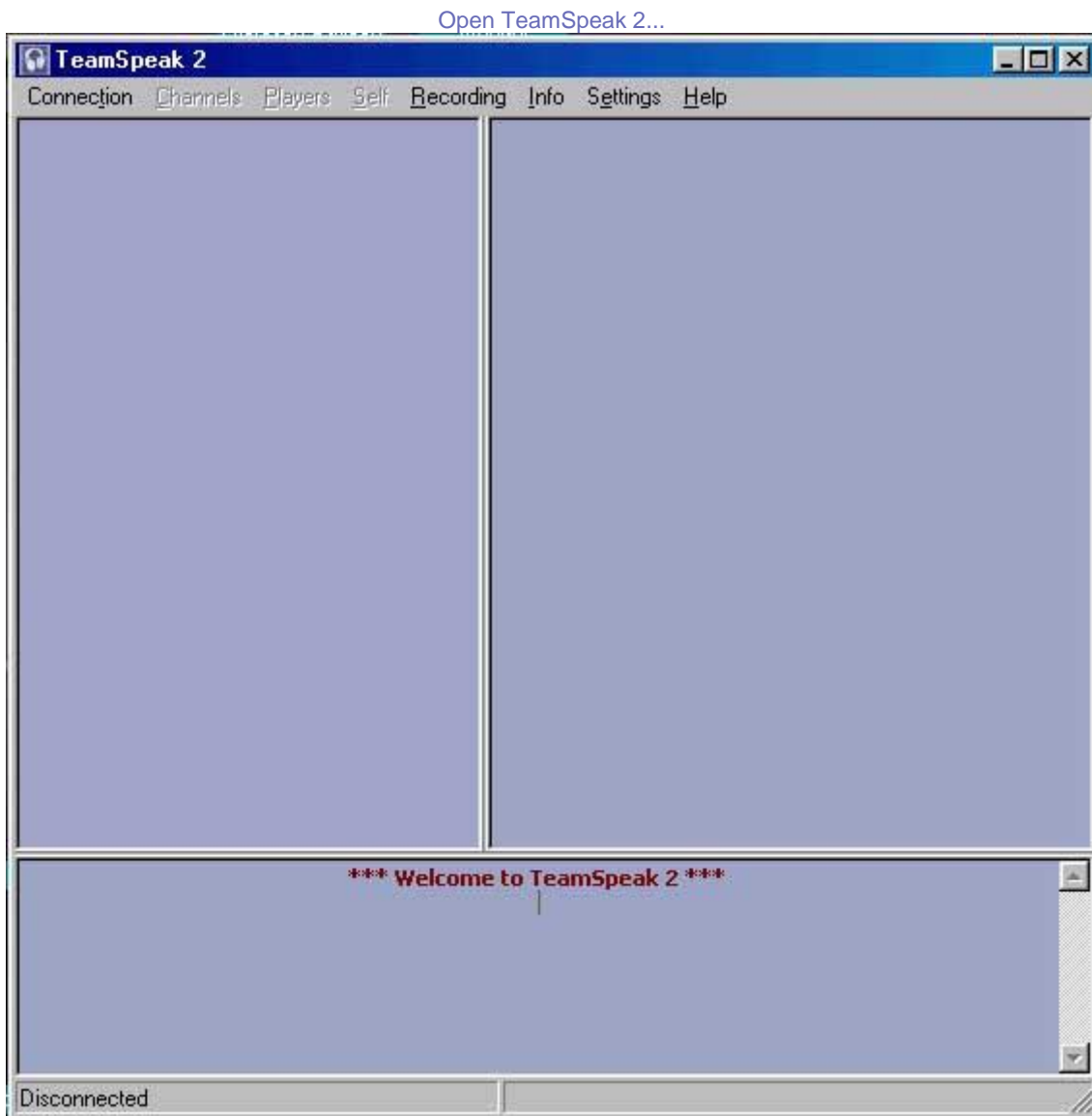
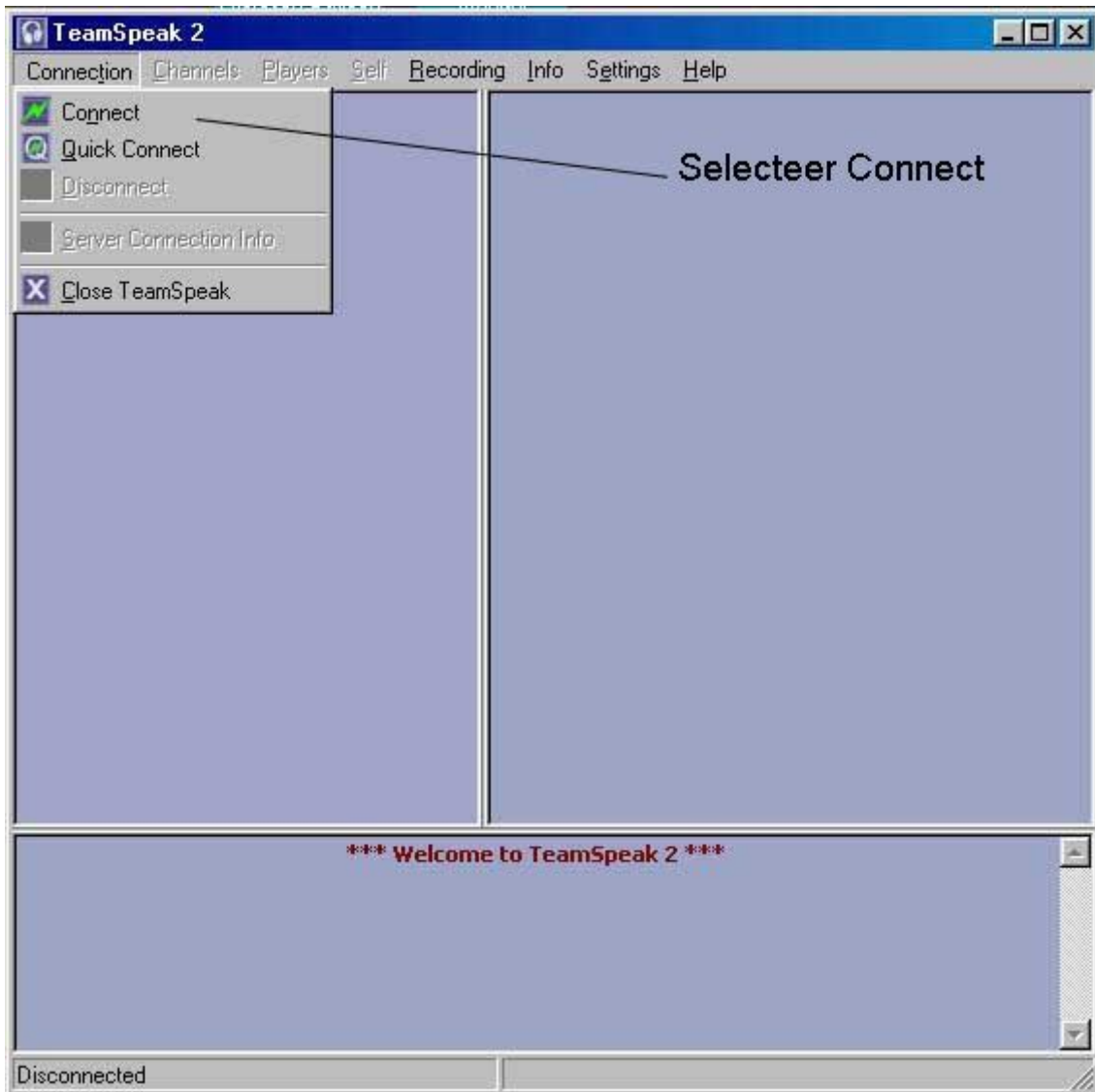


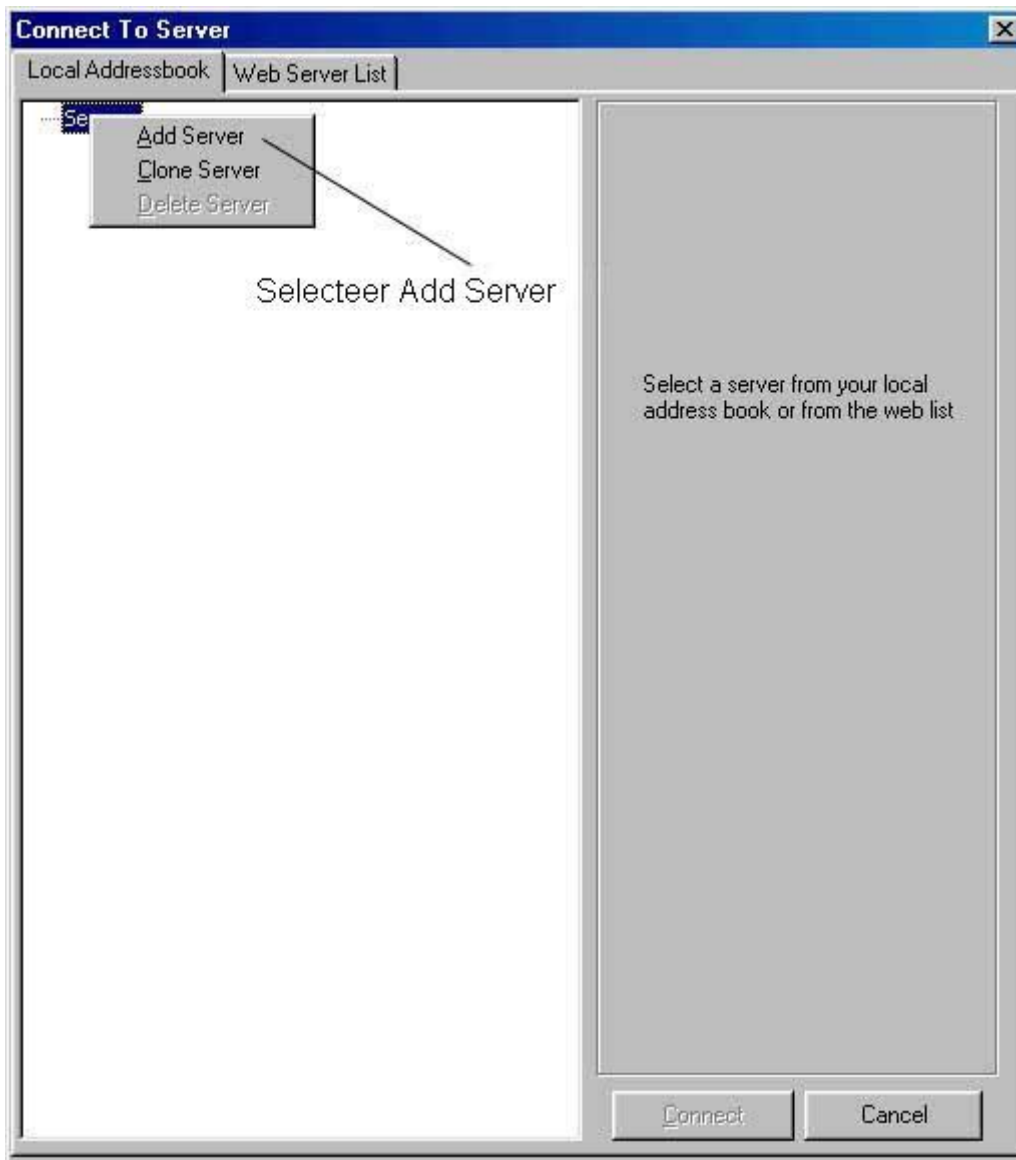
Hoe verbinden? ATC kant...

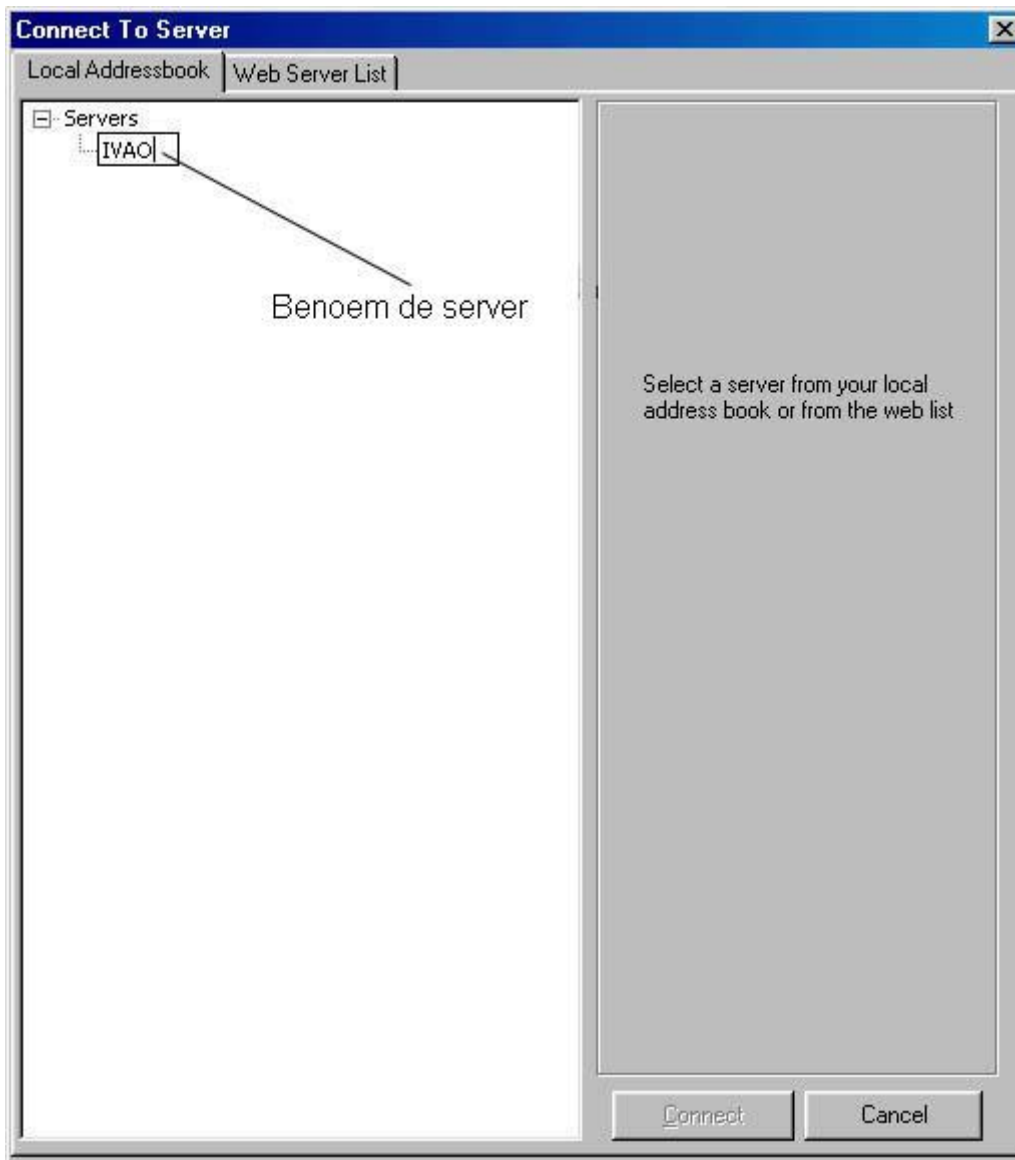


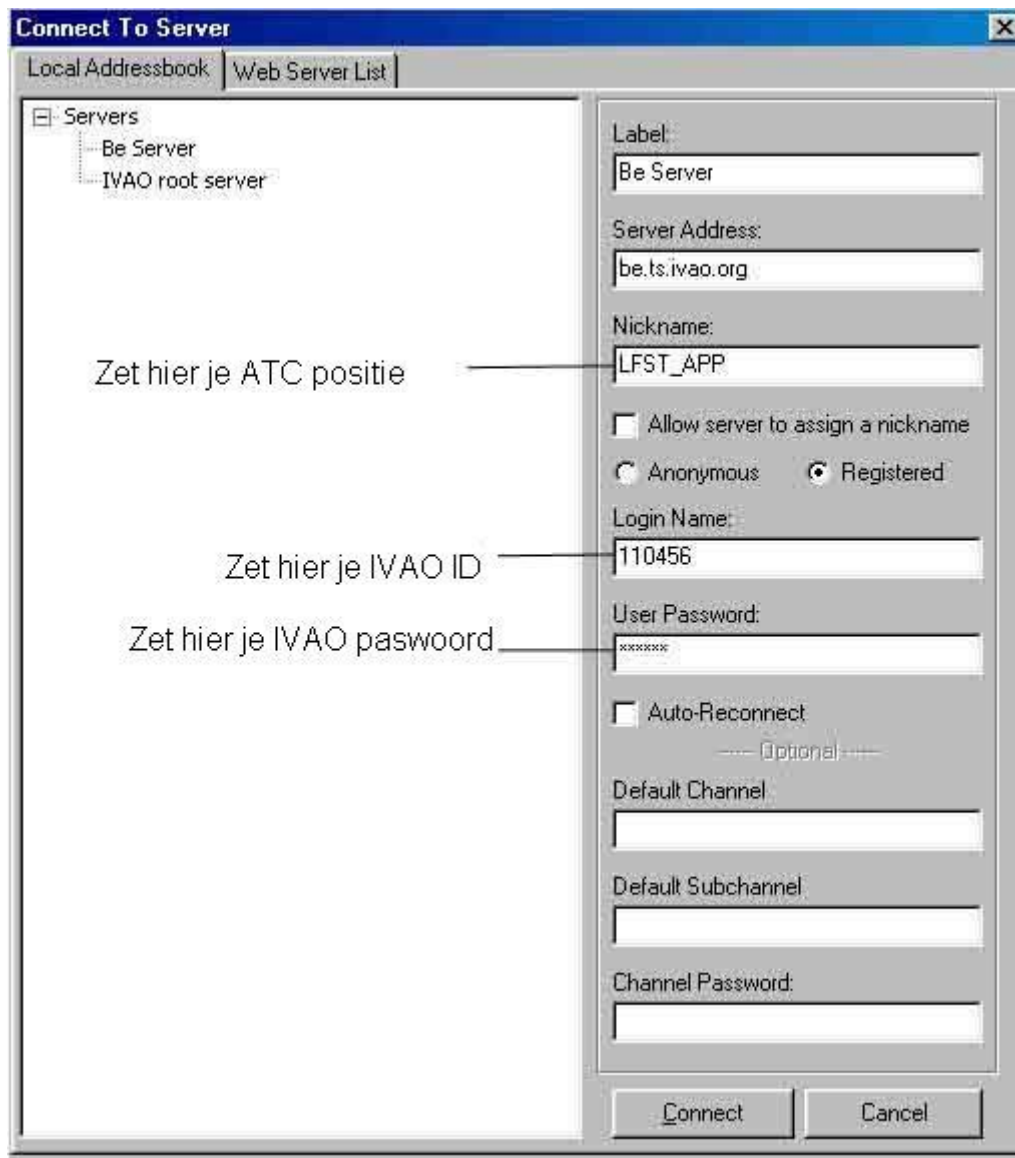
KLASSIEKE VERBINDINGSMETHODE

Ga naar [Snelle verbindingmethode](#)



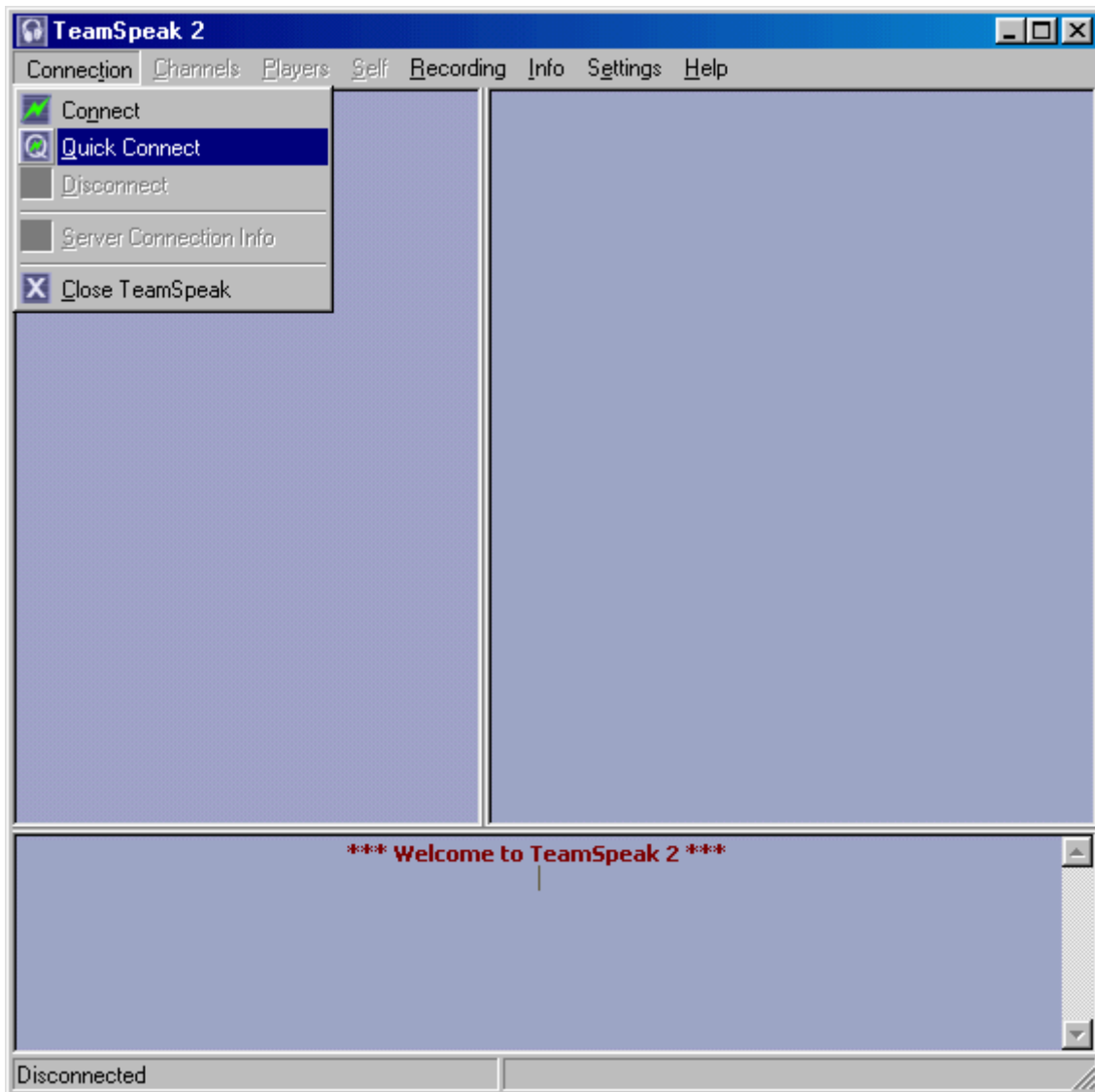






Click on "Connect" ...
Jump to [next step](#)

SNELLE VERBINDINGSMETHODE



Quick Connect

Server address:

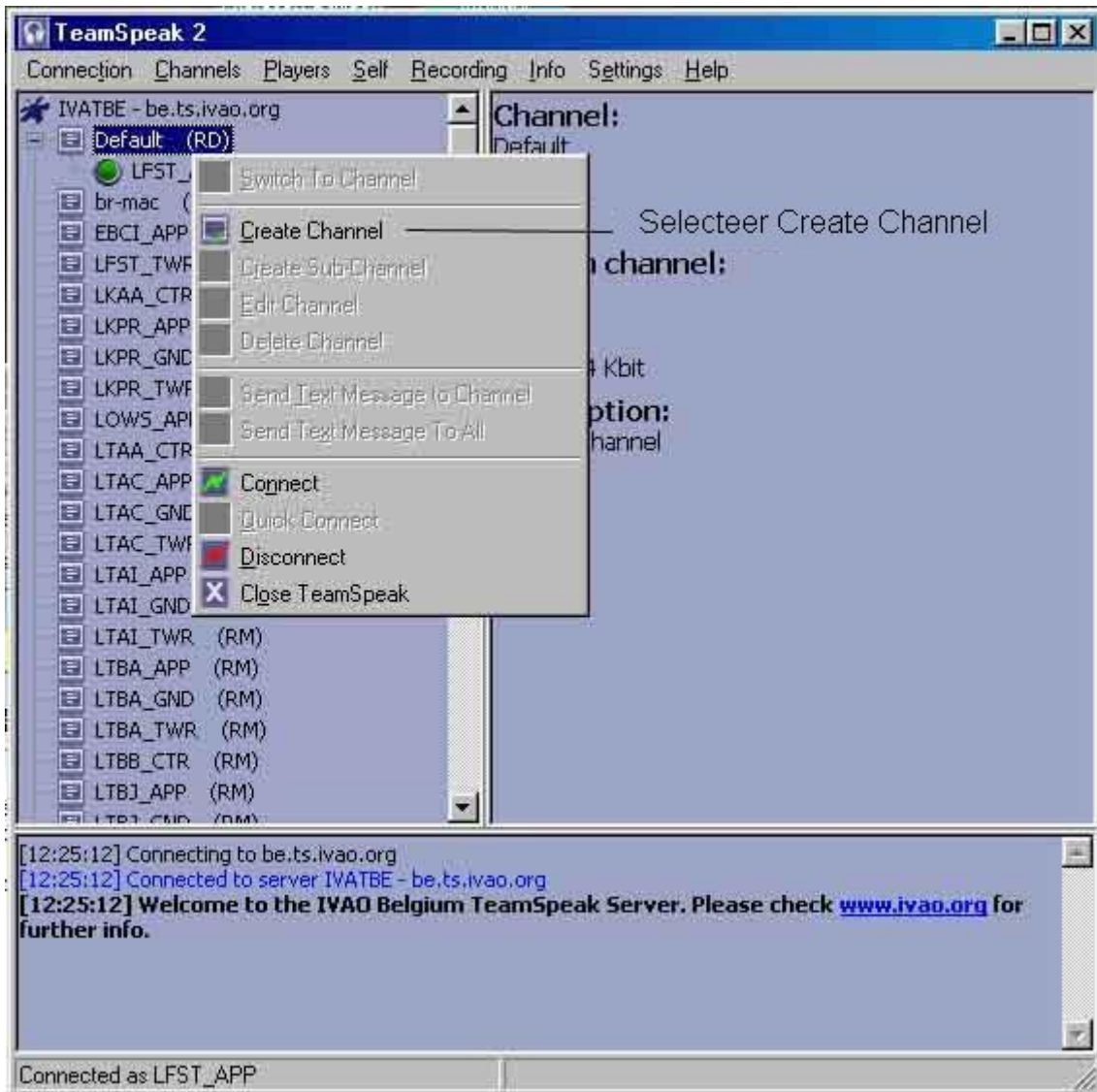
Nickname:

Login Name (optional):

Password:

Net zoals in de Klassieke Methode, stel server adres, jouw callsign, jouw IVAO's ID en password in. Klik dan op Connect

Channel Creation



Create New Channel [X]

Required

Name: LFST_APP — Zet hier je Callsign

Topic: *Zet hier de naam en de frequentie van je positie*

Password: *Dit vakje niet invullen*

Codec: GSM 16.4 Kbit

Descr: Duid hier je geluidscodec aan
16.4 kbit geeft een betere
geluidskwaliteit maar gebruikt
Schrijf hier je ATIS

Max Users: 50

Flags: Registered Moderated Sub-Channels
 Default

Deze vakjes niet selecteren

Create Channel Cancel

